

Unearthing...

GIANTS

Exploring for large copper-porphyry deposits
in emerging fields in Western Australia and in Peru

Platypus Minerals Ltd (ASX:PLP)

Investor Presentation

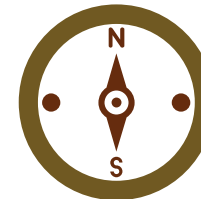
26 March 2015

An Introduction to Platypus Minerals

Platypus Minerals is a copper explorer with diversification between Western Australian and Peruvian copper properties in major mineral districts. The company has made substantial investments in securing these properties and in commencing exploration drilling that has yielded an initial copper discovery in Western Australia at the Company's Gobbos Project. Platypus is increasing its ground holding while world class opportunities are undervalued so that the Company's shareholders can enjoy benefits as the mineral cycle picks up again. During this time the Company will be further drill testing its copper targets especially in the Chanape area of the San Mateo Mining District in Peru, located some 100 km east of the capital Lima.

A Tenacious Explorer Adding Value

Copper (Cu) – Gold (Au) – Molybdenum (Mo) – Tungsten (W)



QUALITY PROJECTS
+
ATTRACTIVE CAPITAL
STRUCTURE

CAPITAL RAISING

Targeted EXPLORATION
over WA and Peru projects

- Cu-Mo-W discovery at Gobbos
- Peru: prime landholding around Chanape Cu-Au discovery
- Tight capital structure
- \$0.5 M placement; completed Sep 2014
- \$0.75 M rights issue; completed Nov 2014 – Jan 2015
- **Extension Drilling** at Gobbos Cu-Mo prospect in WA
- Field work in Peru ahead of drilling
- High probability of further success
- Potential for multiple increase in value

Platypus – Proven International Explorer

Capabilities



Experienced explorer, including international exposure and South American success



5 years gold exploration in Brazil – proof of concept (large sediment hosted disseminated gold deposit)



2 years epithermal gold exploration in Indonesia



4 years IOCG exploration in WA – Mt Webb: 246 m @ 0.22% Cu

Experienced and Diversified Leadership

Directors



Rick Crabb
Chairman

B.Juris, LLB, MBA, FAICD
Director and Chairman of
listed companies: Paladin
Energy, Otto Energy,
Golden Rim Resources.



Tom Dukovcic
Managing Director

B.Sc(Hons), MAIG,
MAICD Geologist with
20+ yrs experience;
proactive manager.



Laurie Ziatas
Director

B.Juris, LLB, EMBA,
MMedConflRes, MAICD
Over 33 years of legal and
business experience; co-
founder of Inca Minerals
and Platypus Resources.



Dennis Trlin
Director

B.Ec
Background in
stockbroking,
investment advice and
research; co-founder of
Platypus Resources

Experienced and Diversified Leadership

In-Peru Management



Gary Anderson
General Manager

Former President and CEO of Canadian company High-Ridge Resources Inc; responsible for initial drilling of Chanape in 2008.



Dr. Adam Szybinski
Exploration Manager

Identified porphyry potential at Chanape and led the initial discovery drilling program in 2008.



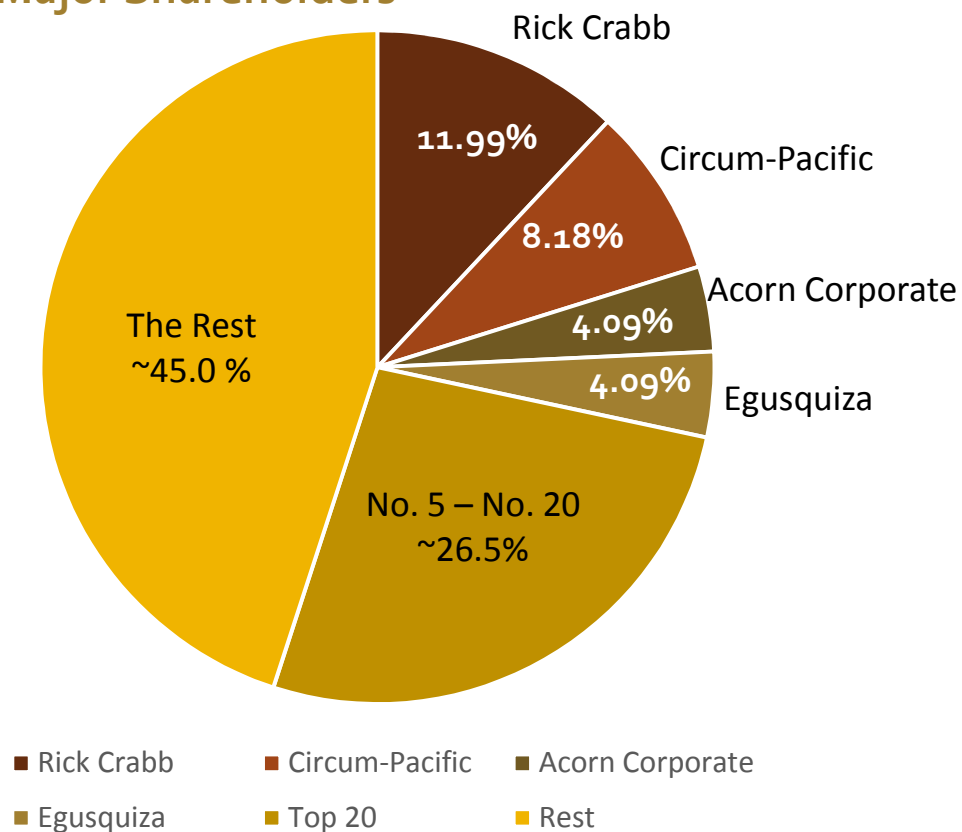
Tightly Held and Marketable Capital Structure

Current Capital Structure

Market

Market Capitalisation	\$3.8 million, @ 1.9c (26 March 2015)
Shares on Issue	201.36 million
Options	Listed: 18.71M; 3.5c, 1 Dec 2016 Unlisted: 27.75M; 3.0c, 30 Sep 2017 5.00M; 3.0c, 12 Jan 2017

Major Shareholders



Platypus Minerals – Hunting GIANTS

Miocene Porphyry Belt
of Peru:

East Pilbara Region of
Western Australia

Platypus Minerals holds a strategic landholding in a new copper porphyry province in the heart of a belt hosting multiple world class deposits

LAND OF THE
GIANTS

Platypus is farming into a 200 sq km project in a highly mineralised multi-commodity area in WA

Peruvian Miocene Porphyry Belt



GIANTS in the Peruvian Miocene Porphyry Belt:

La Granja; 3.6 Bt @ 0.51% Cu (Inferred; 0.3 %Cu cut-off; Rio Tinto Presentation, 16.04.2012; estimated capital US\$3bn; prod 2017 at 500Kt Cu pa over 40 yrs)

Michiquillay; 544 Mt @ 0.69% Cu
(Anglo American; US\$430M in 2007; pre feasibility)

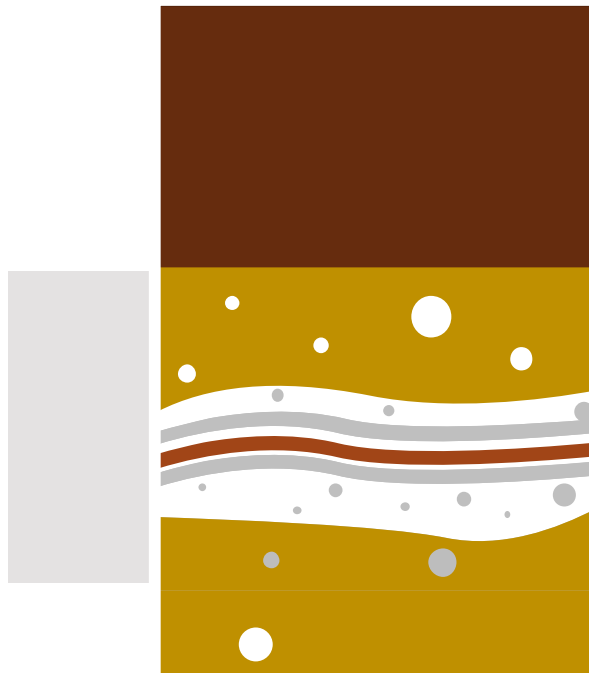
Antamina; 745 Mt @ 1.06% Cu, 0.67% Zn, 0.026% Mo (2010); (BHBP, Xstrata, Teck, Mitsubishi; world top 10 by volume; US\$3.5bn capital)

Toromocho; 1.54 Bt @ 0.47% Cu (JORC reserves; www.chinalco-cmc.com); (Chinalco; purch: C\$840M in 2007; US\$3.5Bn capital; in production, estimated 150Kt pa; design 250Kt pa; largest ball mill in the world, 12m diam.)

*Platyplus has secured 230 sq km of granted concessions in the Chanape area only 30 km from Toromocho... **in the heart of giant country**, and...*

Chanape – A New District With Exciting Potential

Platypus tenure completely encircles the Inca Minerals Ltd (ASX:ICG) Chanape porphyry discovery:

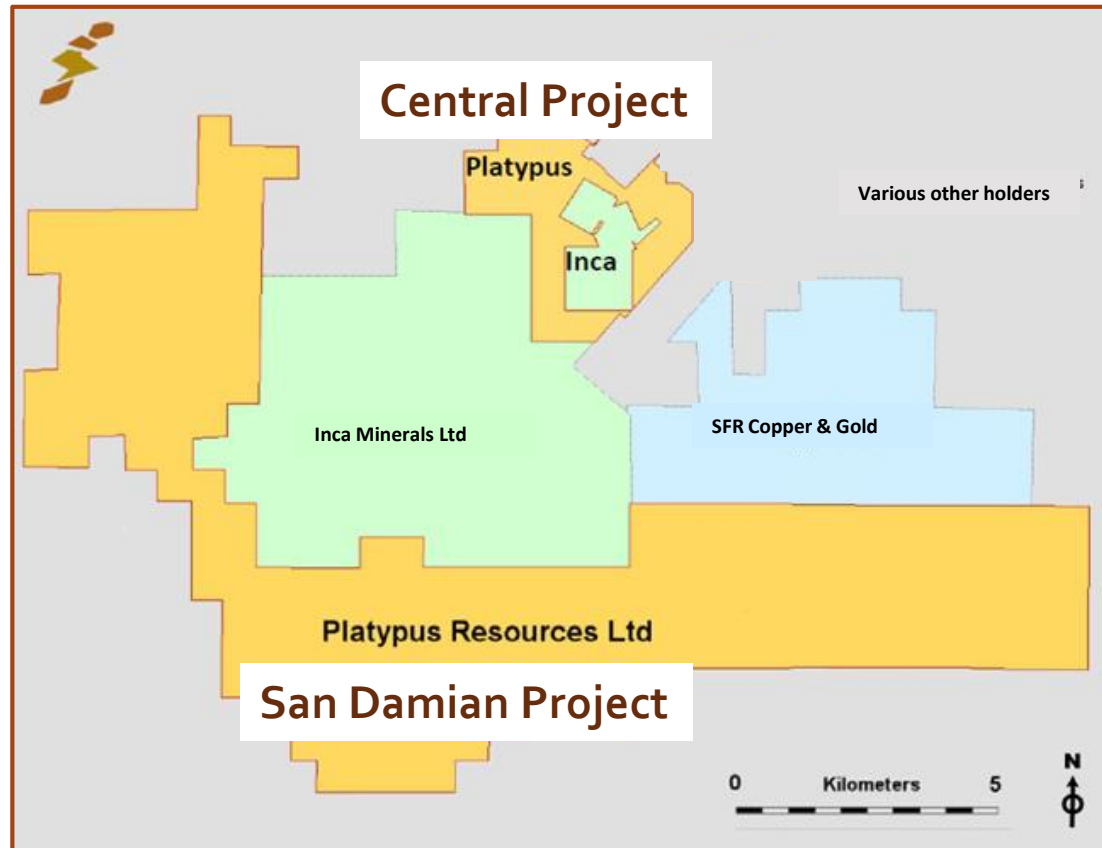


↓ **284 m** @ 0.32% Cu (CHDDHo11)

↓ **55 m** @ 2.3% Cu (CHDDHo12)

Chanape is a completely preserved porphyry system with mineralisation identified over a 1.3 km vertical extent, and open at depth...
a **NEW GIANT ??**

Platypus – Significant Landholding in Hot Spot



Strategic holding (>200 km²) in a historical Pb-Zn-Ag-Au-Cu mining district, now confirmed to host Cu-porphyry deposits.

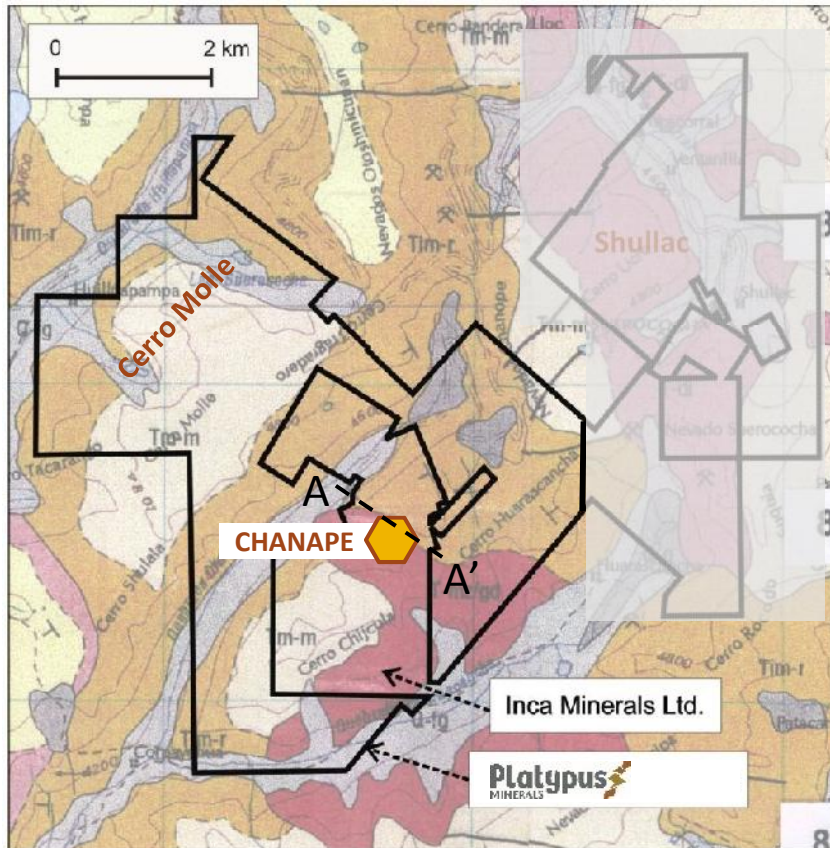
Selected tenement holdings in the Chanape District:

- Platypus
- Inca Minerals
- Sandfire Resources' subsidiary SFR Copper & Gold

Platypus, through 100% subsidiary Platypus Resources Ltd (PRL), has secured two projects in Peru:

- 1 **Central Project** (2,220 ha), surrounding the Inca Minerals (ASX:ICG) Chanape Project.
- 2 **San Damian Project** (20,000 ha), strategic regional holdings.

Central Project – Strategic Holding at Chanape



Platypus's **Central Project** (2,220 ha) entirely encloses the Inca Minerals Chanape Project (805 ha). Platypus has *first right of refusal* over the shaded concessions (1,200 ha).

Inca Minerals Ltd's Chanape Cu-Au Porphyry:

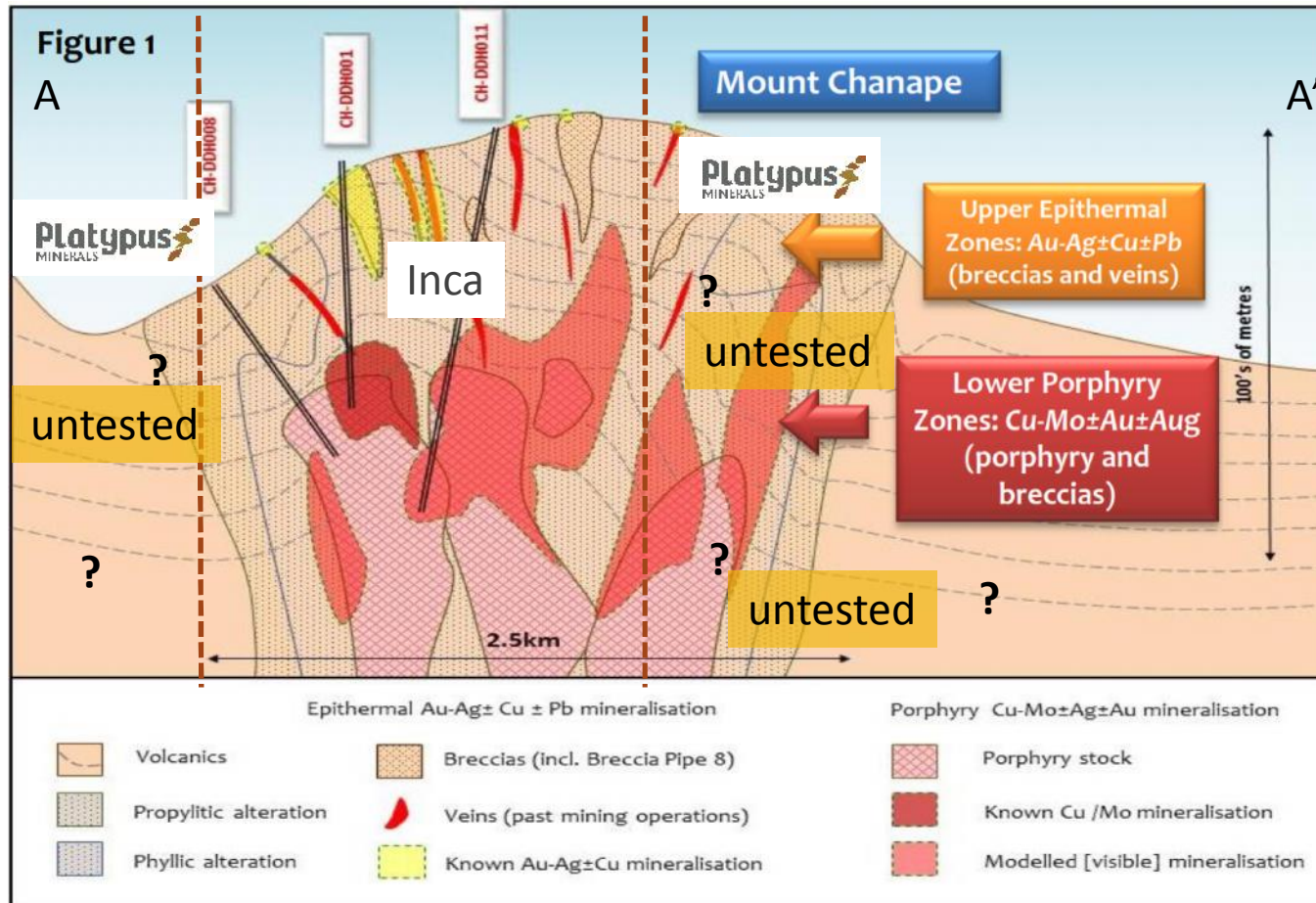
CHDDHo11: 284 m @ 0.32% Cu, 80 ppm Mo; open (porphyry).

CHDDHo12: 55 m @ 2.3% Cu, 0.6 g/t Au, 43 g/t Ag (mesothermal).

Simplified geology, highlighting multi-phase intrusive and volcanic activity (potential porphyry bodies) and **continuity of Chanape geology into Platypus ground.**

Cross-section A-A' on following slide >>>

Chanape – Model and Tenure



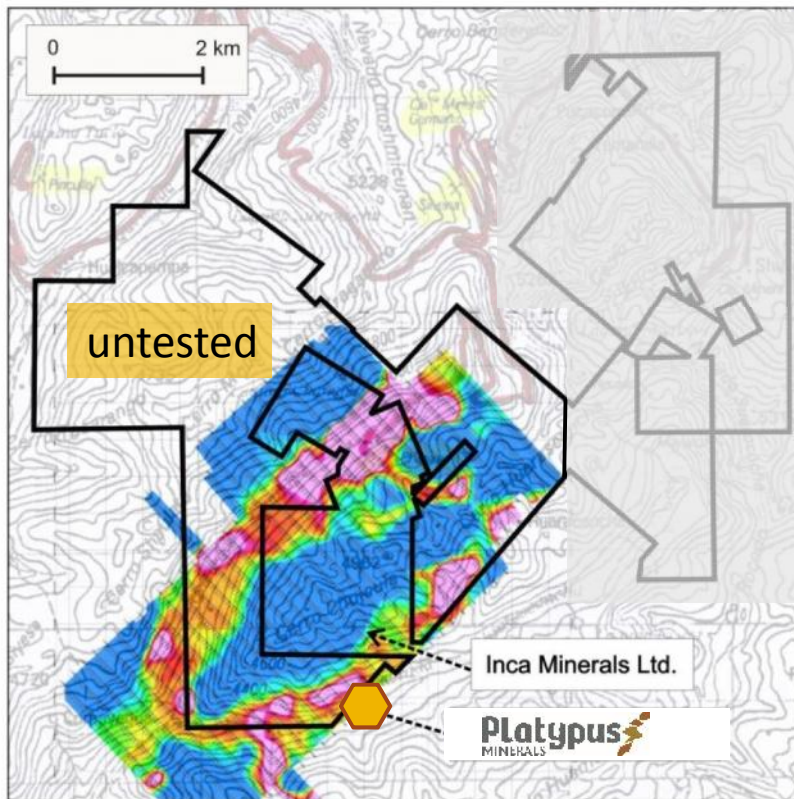
Annotation by Platypus of schematic diagram prepared by Inca Minerals showing position of three deep porphyry holes and potential size of the Chanape porphyry.

Dashed line = approximate position of tenement boundary as estimated by Platypus.

Source: Inca Minerals ASX announcement, 24 February 2014, Figure 1.

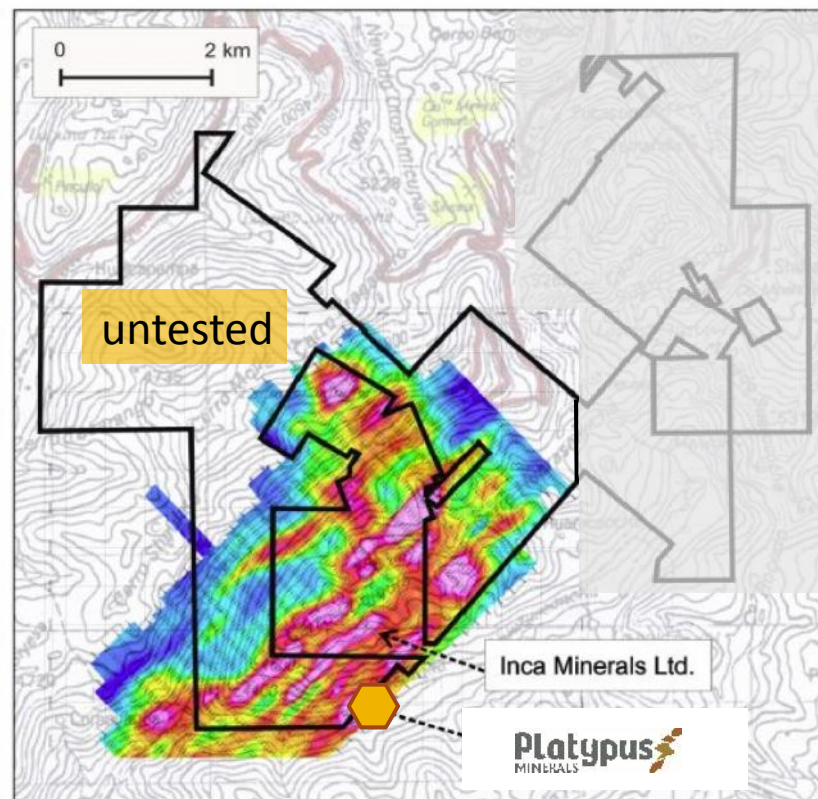
Chanape – Continuity into Platypus Ground

Geophysics highlight the continuity of Chanape features into **Platypus ground**



Magnetics: the annulus might represent a concentration of magnetite in a zone of propylitic alteration surrounding a porphyry deposit.

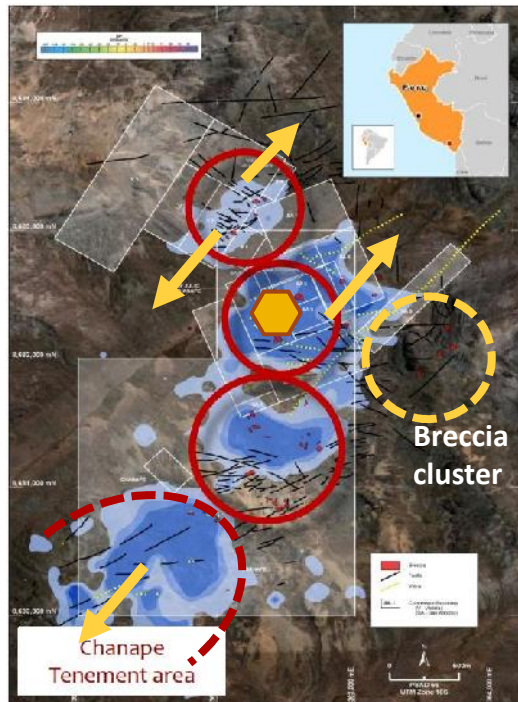
*(High Ridge data, remodelled by Inca Minerals.
Inca Minerals ASX release 30 November 2012).*



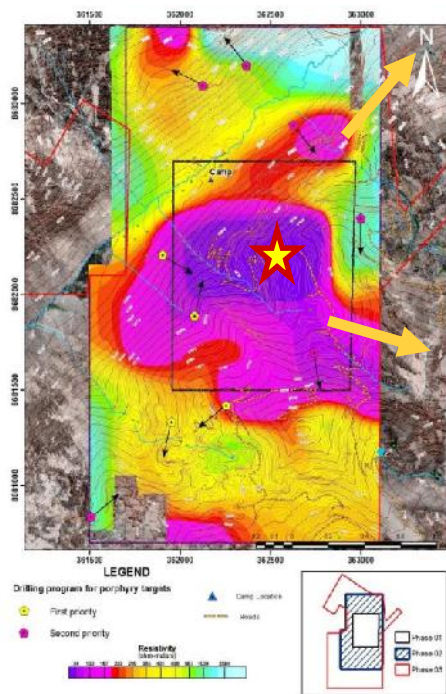
Chargeability: highlights the continuity of predominant NE-SW trends in the general area.

(High Ridge, 2008).

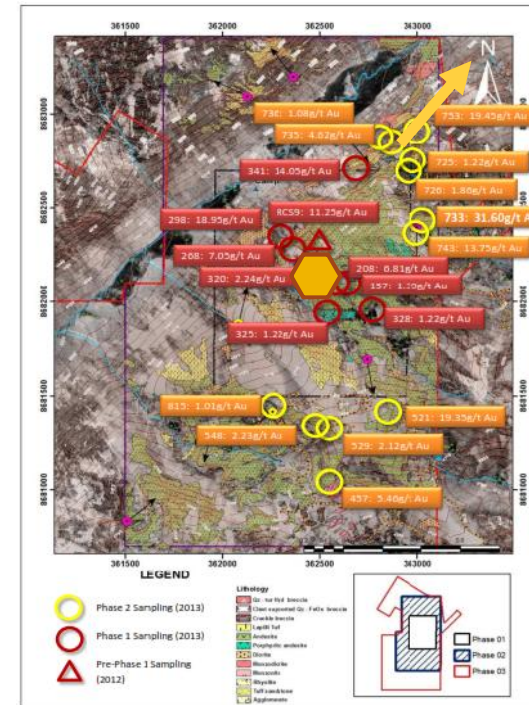
Chanape – Continuity Into Platypus Ground



SP (spontaneous potential) coincident with breccia clusters.



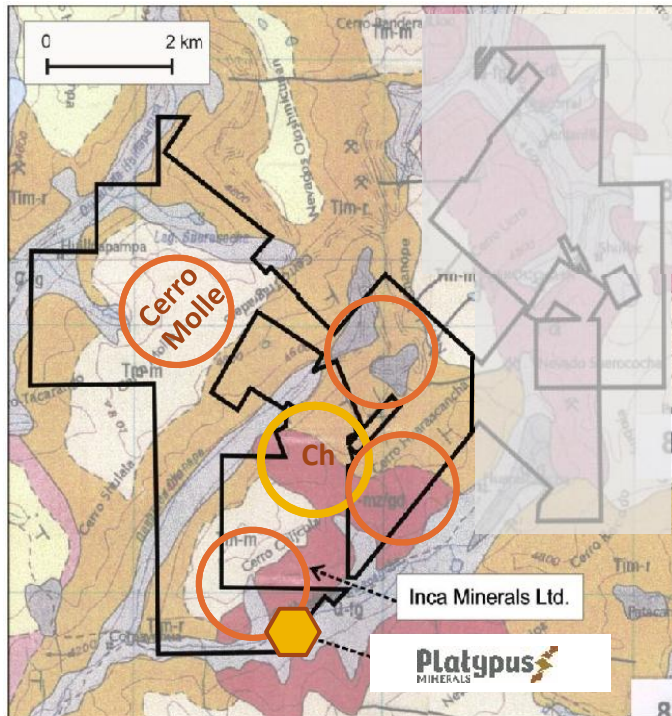
Resistivity trends, including to SE towards breccia cluster.



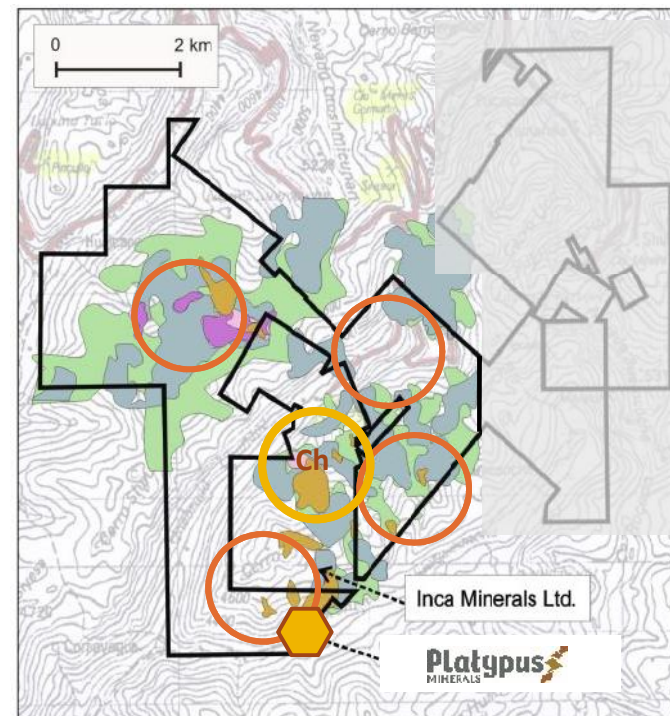
Surface gold (rock chips); up to 31 g/t Au on Platypus boundary.

Range of results from Inca Minerals demonstrating **continuity of mineralised system** into Platypus ground. From Inca announcements dated 13 Sep 2013 and 17 Nov 2013 (further annotated by PLP).

Central Project – Porphyry Targets at Chanape



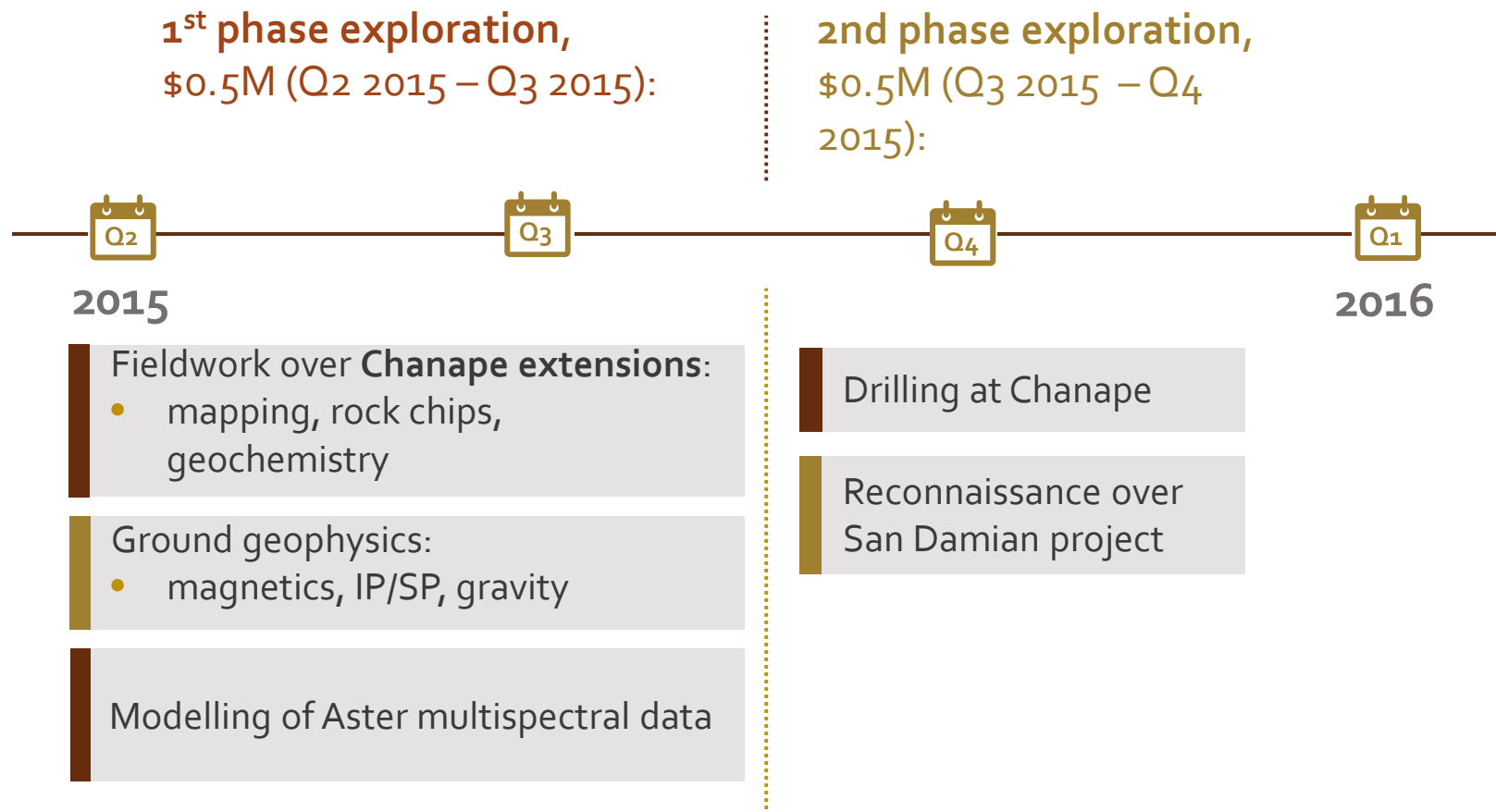
Geology – showing exposed intrusives akin to Chanape, some containing artisanal mines.



Aster remote sensing – showing alteration minerals indicative of porphyry copper environments; ASTER successfully identifies the position of Chanape.

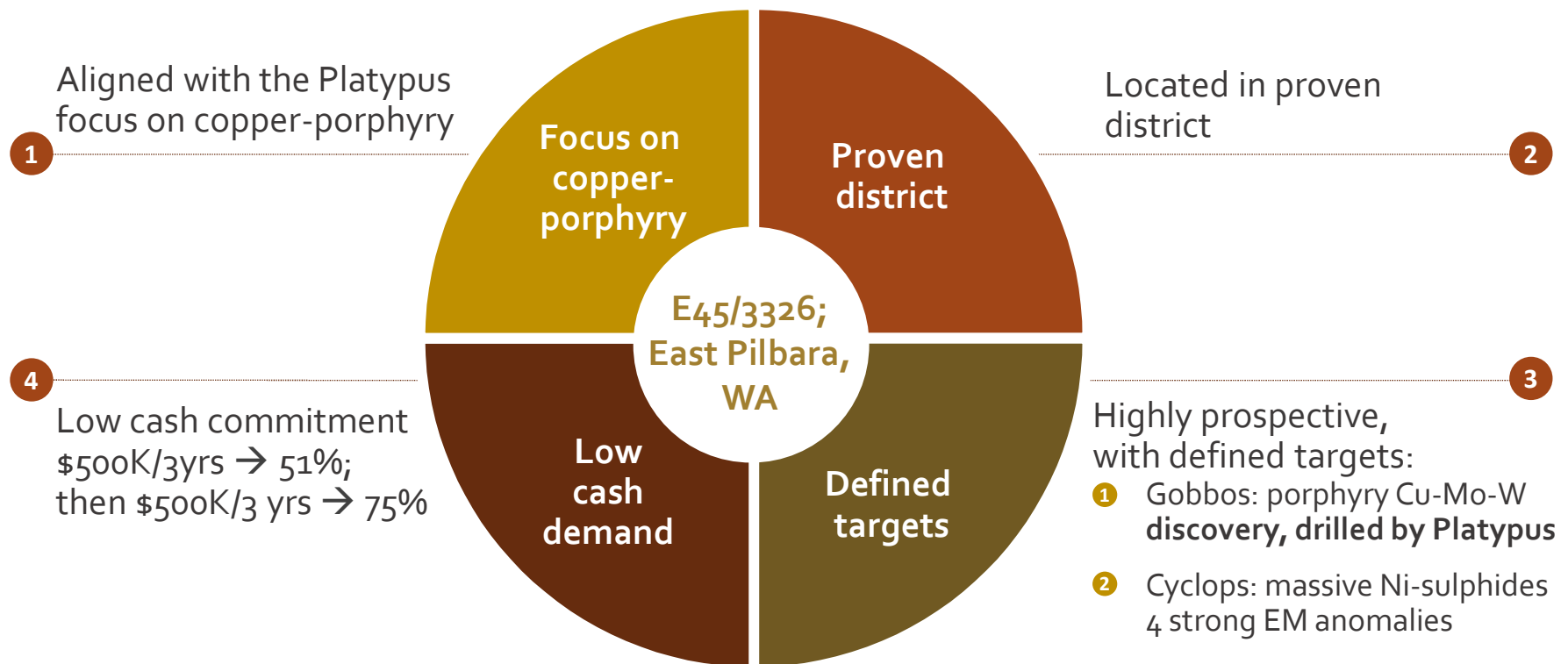
Commanding landholding containing epithermal mineralisation and potentially **4 copper porphyry targets** totally surrounding Inca Minerals' Chanape project.

Chanape – Planned Work Programs

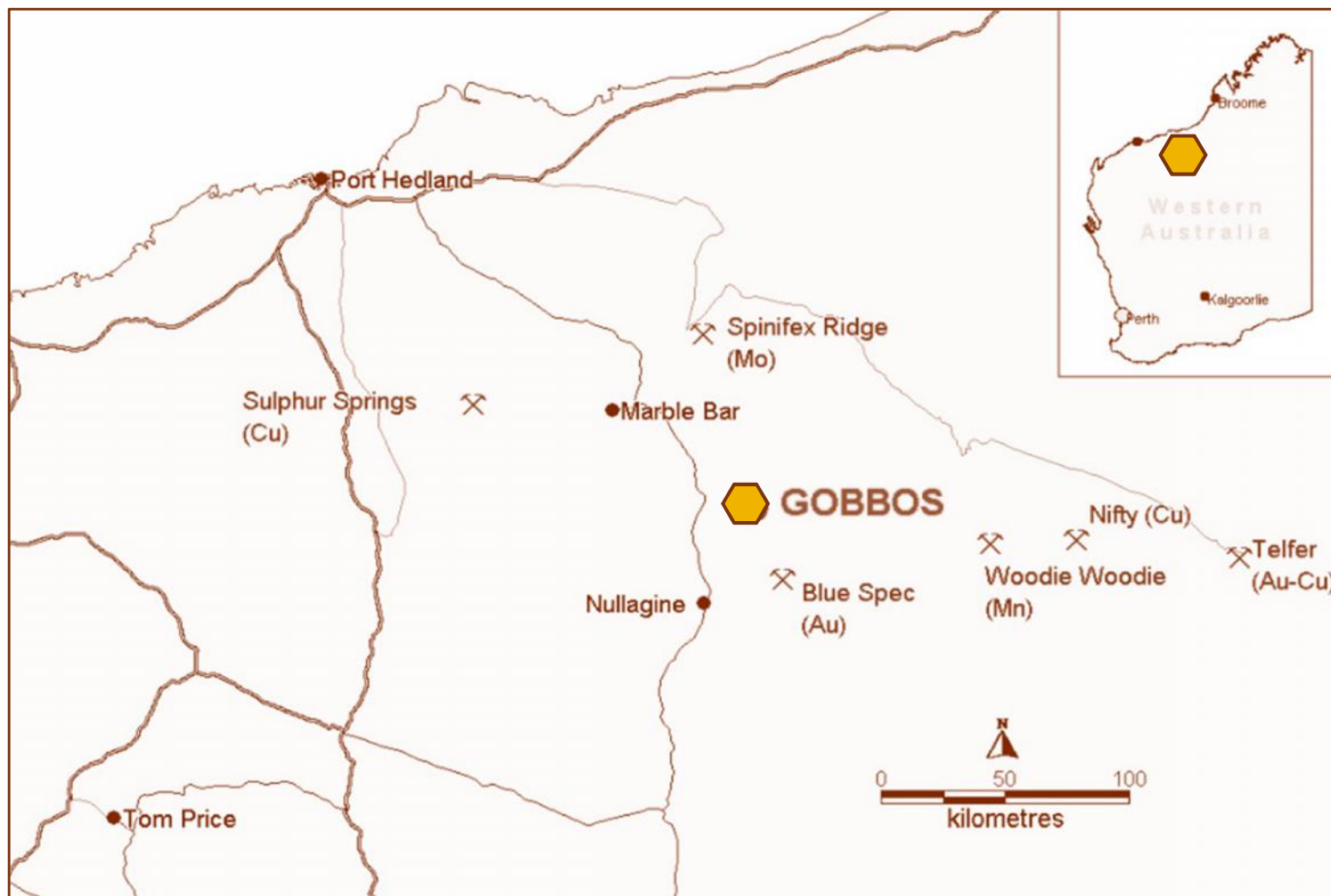


Gobbos – Advanced Cu-Porphyry Target in WA

Platypus holds **farm-in rights** over E45/3326, held by Gondwana Resources Ltd, which contains the **Gobbos Cu-porphyry prospect** and the **Cyclops Ni-sulphide prospect**



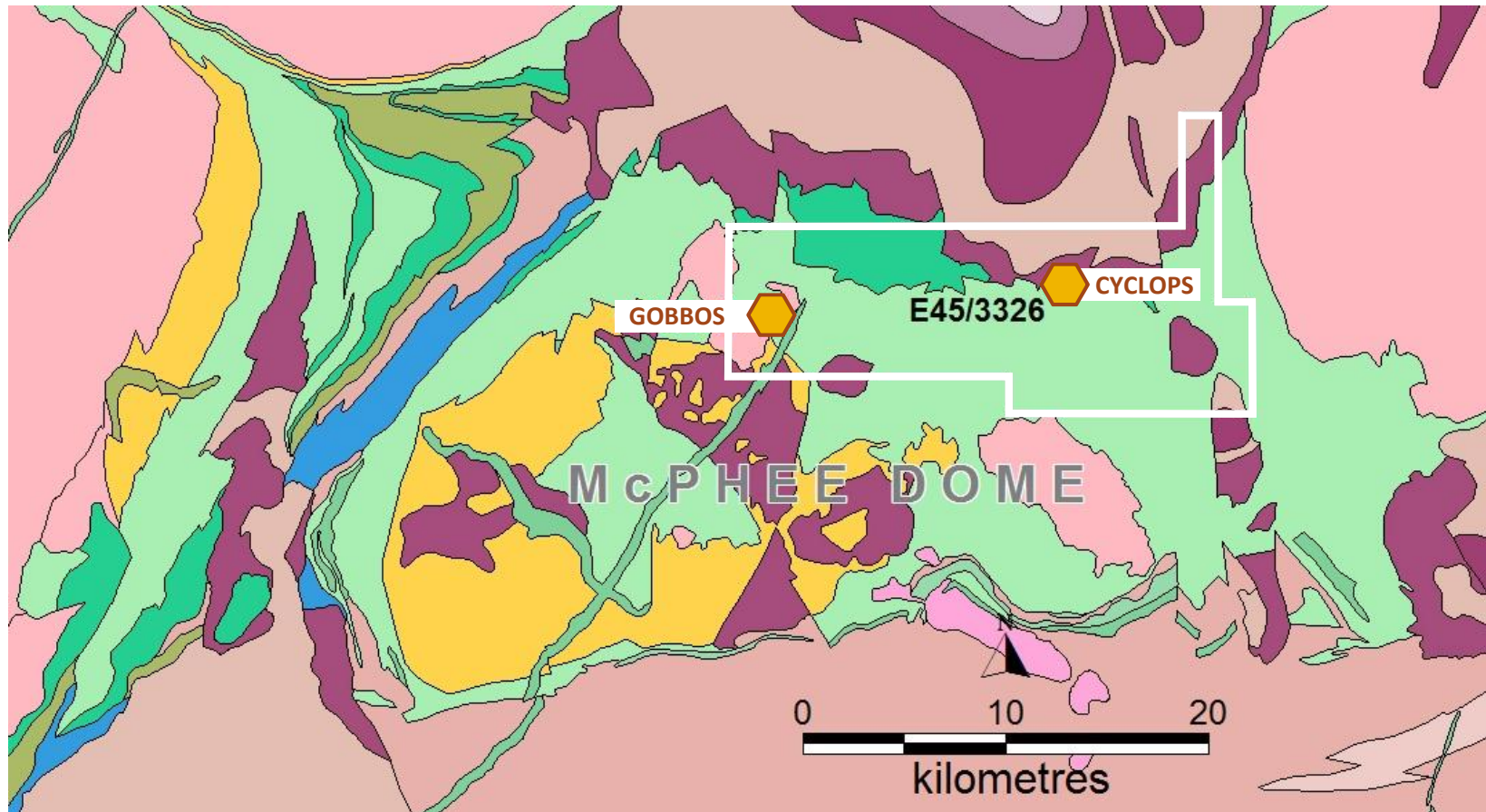
Gobbos (East Pilbara) – A Proven Multi-Commodity District



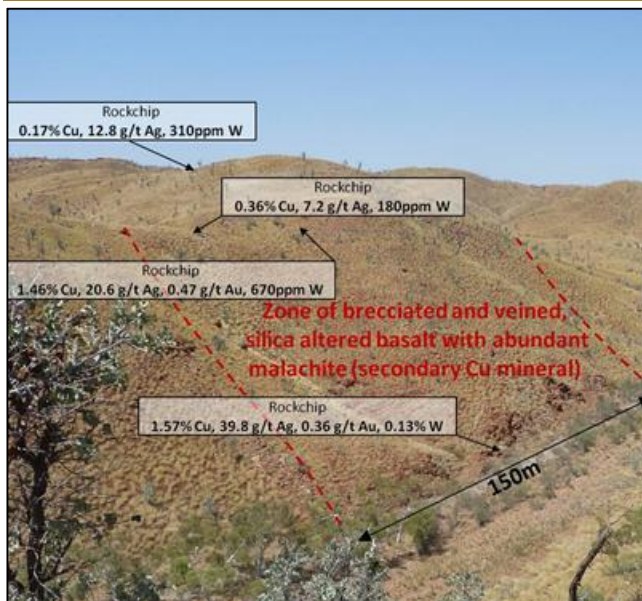
Two Prime Targets

Gobbos: Cu-Mo-W;

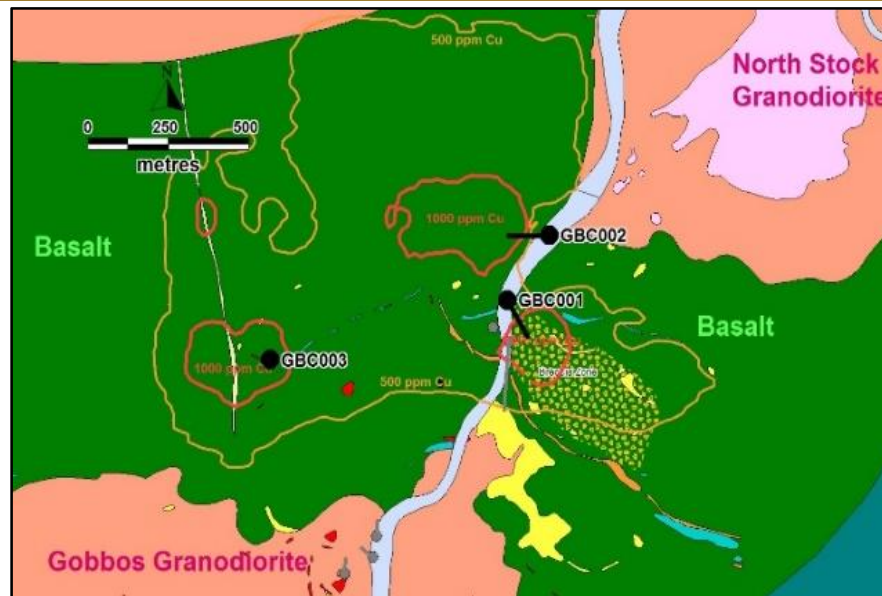
Cyclops: Nickel-Copper



Gobbos – Porphyry Cu-Mo-W



Central Breccia area at Gobbos, tested by drill hole GBC001: **29 m @ 0.22% Cu, 0.03% W**



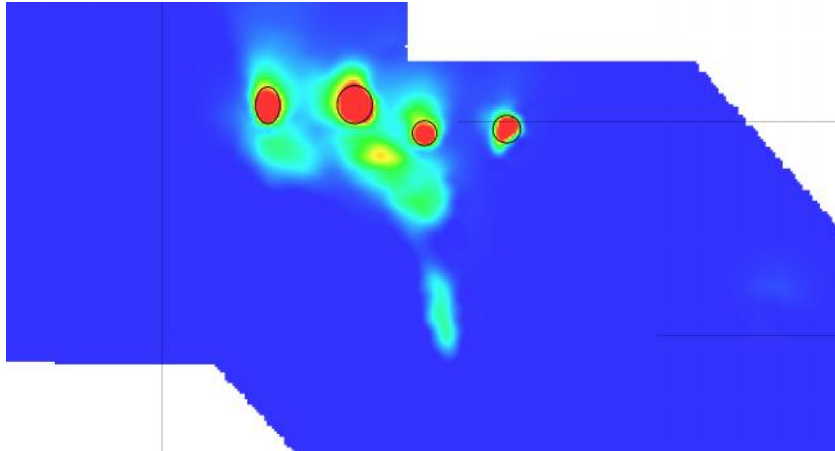
Drilling and Geology (granite, red; basalt, green) showing 1.5km x 1.5km Cu anomaly: Yellow: > 500 ppm Cu; Red: > 1000 ppm Cu (0.1%)
Three holes, tested three targets. **EACH HOLE hit mineralisation**

Target: Basalt / granodiorite contact at depth beneath anomalies hosted by basalt

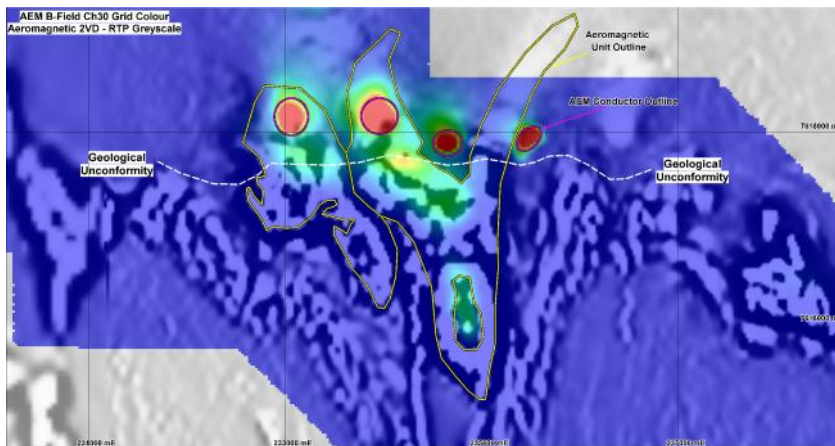
Drilling by Platypus in December 2014: **DISCOVERY** of widespread Cu-Mo-W mineralisation

Outstanding opportunity to test for a large deposit of copper, molybdenum and tungsten

Cyclops (Ni-Cu) – Four Sleeping Giants?



Cyclops: airborne EM survey area showing position of distinct anomalism and four isolated highs



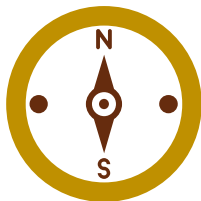
EM anomalies clearly correlating with ultramafic geology (outline) and aeromagnetics → **massive Ni-Cu sulphide targets**

Why Invest?

Market cap: \$3.8 M → \$??M...



ASX-listed junior explorer with **experienced and diversified** board and management team, **excellent projects** and a **clear strategy to add value**



Exploring two highly prospective projects:

1. **GOBBOS** copper porphyry, nickel-copper sulphides in WA
 - **Cu-porphyry DISCOVERY**, needs definition drilling
2. **PERU** copper-gold; >200 sq km in heart of copper porphyry giant country
 - Strategic landholding in Chanape area
 - **Ground level entry point** into a **hot district** in Peru



Excellent upside for investors in the copper space – Platypus represents an **opportunity to invest ahead of possible multiple uplift** in value as targeted exploration programs are rolled out over excellent targets

Disclaimer & Competent Person Statement

This presentation has been prepared by Platypus Minerals Ltd (ABN 99 008 894 442) ("Platypus") based on information available to it. No representation or warranty, express or implied, is made as to the fairness, accuracy, completeness or correctness of the information, opinions and conclusions contained in this presentation. To the maximum extent permitted by law, none of Platypus, its related bodies corporate, its or their directors, employees or agents, advisers, nor any other person accepts any liability for any loss arising from the use of or reliance on this presentation or anything contained in, omitted from or otherwise arising in connection with it, including, without limitation, any liability arising from fault or negligence on the part of Platypus, its related bodies corporate or its or their directors, employees or agents.

The distribution of this document in jurisdictions outside Australia may be restricted by law and you should observe any such restrictions.

This presentation is not an offer, invitation, solicitation or recommendation to invest in Platypus and neither this document nor anything in it shall form the basis of any contract or commitment. The information in this presentation does not take into account the investment objectives, financial situation and particular needs of investors and does not constitute investment, legal, tax or other advice. Before making an investment in Platypus an investor should consider whether such an investment is appropriate to their particular investment objectives, financial situation and particular needs and consult a financial adviser if necessary. This presentation does not purport to constitute all of the information that a potential investor may require in making an investment decision. Investments are subject to investment risk, including possible delays in repayment and loss of income or principal invested. Platypus does not guarantee the performance of the investment referred to in this presentation, the repayment of any capital invested or any particular rate of return.

You acknowledge that circumstances may change and the contents of this presentation may become outdated as a result. Platypus accepts no obligation to correct or update the information or opinions in this presentation. Opinions expressed are subject to change without notice.

By accepting this document, you agree to be bound by the above limitations.

The information in this report that relates to Exploration Results is based on information compiled by Mr Tom Dukovic, who is an employee of the Company and a member of the Australian Institute of Geoscientists and who has sufficient experience relevant to the styles of mineralisation and the types of deposit under consideration, and to the activity that has been undertaken, to qualify as a Competent Person as defined in the 2012 edition of the "Australasian Code for Reporting of Exploration Results, Mineral Resources and Ore Reserves." Mr Dukovic consents to the inclusion in this report of information compiled by him in the form and context in which it appears.

Certain statements in the presentation are or maybe "forward-looking statements" and represent Platypus's intentions, projections, expectations or beliefs concerning among other things, future exploration activities. The projections, estimates and beliefs contained in such forward looking statements necessarily involve known and unknown risks, uncertainties and other factors, many of which are beyond the control of Platypus, and which may cause Platypus's actual performance in future periods to differ materially from any express or implied estimates or projections. Nothing in this presentation is a promise or representation as to the future. Statements or assumptions in this presentation as to future matters may prove to be incorrect and differences may be material. Platypus does not make any representation or warranty as to the accuracy of such statements or assumptions.



L1, 254 Railway Parade
West Leederville WA 6007

Contact **Tom Dukovic**
Managing Director



PO Box 1245 West Leederville WA 6901
Tel: 08 9363 7800; Fax: 08 9363 7801



WEB: www.platypusminerals.com.au



INFO: office@platypusminerals.com.au